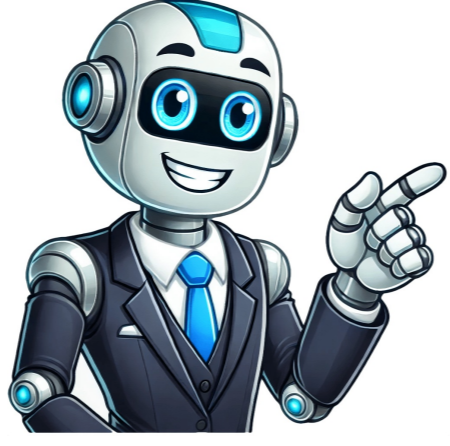


[Click Here](#)





























Smart planning and good timing can substantially reduce these expenses. Homeowners find excellent discount opportunities during fall and winter months. You can save 15-30% through smart negotiation and comparison shopping. On top of that, it is significant to have your system regularly - saving homeowners \$150-\$500 annually in potential repair costs. The long-term value matters more than upfront costs. Quality openers, proper installation, and safety features create a reliable system that lasts years. Smart integration and battery backup systems add to original expenses but provide valuable convenience and security benefits. The right opener type and power rating for your specific door matter more than finding the lowest price. A properly matched system reduces wear, prevents getting pricey repairs, and ensures safe operation throughout its lifespan. April 2025 Item detailsQtyLow High Automatic Garage Door Cost Non-discounted retail pricing for popular: 1/2 HP chain drive with 2 remote controls, keypad and rail mounting system.1 door\$233.47\$352.26 Automatic Garage Door Opener Installation Labor, Basic Basic labor to install automatic garage door opener with favorable site conditions. Assemble unit and fabricate support bracketing. Install unswitched branched circuit with grounded receptacle near head unit. Connect head unit to power receptacle. Install opener switch and program remote control. Attach and adjust drive mechanism. Includes planning, equipment and material acquisition, area preparation and protection, setup and cleanup.1 door\$233.47\$352.26 Automatic Garage Door Opener Installation Job Supplies Cost of related materials and supplies typically required to install automatic garage door opener including: basic replacement fasteners, hardware, sealants, adhesives and lubricants.1 door\$233.47\$352.26 Automatic Garage Door Opener Installation Equipment AllowanceJob related costs of specialty equipment used for job quality and efficiency, including: Pneumatic framing nailer, 12" miter saw and 3 1/4" electric planer. Daily rental. Consumables extra.1 door\$233.47\$352.26 Unused Minimum LaborBalance of 2 hr(s) minimum labor charge that can be applied to other tasks. Totals - Cost To Install Automatic Garage Door Opener Average Cost per Door In April 2025 the estimated cost to install an Automatic Garage Door Opener starts at \$484 - \$835 per door. Use our Cost Calculator for cost estimate examples customized to the location, size and options of your project. To estimate costs for your project:1. Set Project Zip Code Enter the Zip Code for the location where labor is hired and materials purchased.2. Specify Project Size and Options Enter the number of "Items" required for the project.3. Re-calculate Click the "Update" button. Homewyse uses the Unit Cost Method for up-to-date example estimates and custom estimates created with Homewyse Lists. The Unit Cost Method promotes clear communication, sets realistic expectations between the customer and service professional - and results in mutual trust, fair pricing and high customer satisfaction. This example estimate is for BASIC work performed in readily serviceable conditions by qualified professionals, using popular, IN STOCK products, materials and supplies available at home improvement retailers. Your actual costs will vary due to the unique conditions, requirements, labor options and material choices of your project. Work not mentioned on this page, work with schedule difficulty, work during periods of local labor shortages, and work using master craftsman, premium materials, custom built products, project supervision may result in HIGHER COSTS! This example estimate is for educational and illustrative purposes - it is NOT a substitute for written quotes from trade professionals. Homewyse strongly recommends that you contact reputable professionals for itemized assessments of work required and costs for your project - before making any decisions or commitments. The example estimate includes: Costs for local material / equipment delivery to and service provider transportation to and from the job site. Costs to prepare the worksite for Automatic Garage Door Opener Installation, including costs to protect existing structure(s), finishes, materials and components. Labor setup time and mobilization time typical of local, small Automatic Garage Door Opener Installation jobs. The example estimate does NOT include:Costs for any work or materials not specifically mentioned on this page. Costs for removing, relocating, repairing, or modifying existing framing, surface finishes (including molding) and fixtures, HVAC, electrical, and plumbing systems - or bringing any systems into compliance with current building codes.Costs for testing and remediation of hazardous materials (asbestos, lead, radon, etc.). General contractor overhead and markup for organizing and supervising the Automatic Garage Door Opener Installation. Add 13% to 22% to the total cost above if a general contractor will supervise this project. Sales tax on materials and supplies. Permit or inspection fees (or portion thereof) required by your local building department for your overall project. References - Automatic Garage Door Opener Installation Product and Supplies Data: Home Depot Garage Door Hardware Supplies Home Depot, Apr 2025, Website Product and Supplies Data: Lowes Garage Door and Supplies Lowes, Apr 2025, Website Product and Supplies Data: Ace Hardware - Garage Door and Hardware Supplies Ace Hardware, Apr 2025, Website Product and Supplies Data: Menards Garage Door and Supplies Menards, Apr 2025, Website Home Improvement 1 2 3 Homer, TLC, Apr 2025, Editorial Staff, ISBN 696213273 Guide to Home Repair Cool Springs Press, Jan 2016, Editorial Staff, ISBN 1591866634 Outdoor Projects 1 2 3 Homer, TLC, Mar 2003, Editorial Staff, ISBN 696206730 Carpentry and Building Construction Glencoe/McGraw-Hill; 6th edition, Jan 2003, Mark Feirer, John Feirer, ISBN 00782702X Occupational Employment and Wage Statistics US Bureau of Labor Statistics, Apr 2025, Staff Employer Costs for Employee Compensation US Bureau of Labor Statistics, Apr 2025, Staff Project Spending Data: Harvard University JCHS Homeowner Expenditures Harvard University, Apr 2025, Website This infographic highlights some of the decisions and job specific issues that could impact the actual cost of Automatic Garage Door Opener Installation - if applicable to your job. Our FREE hiring guide helps you hire wisely, get quality craftsmanship and understand fair pricing for your specific project. We value your input. So, let us know - did we meet your needs? how can we improve this site? Your comments and sharing are greatly appreciated! Send your feedback or questions. Save and share Homewyse on social media using the buttons below: Want to give your brand videos a cinematic edge? Join our visual experts and special guests for an info-packed hour of insights to elevate your next video project. Tune in on June 24 at 11am ET.Register NowEnjoy sharper detail, more accurate color, lifelike lighting, believable backgrounds, and more with our new model update. Your generated images will be more polished than ever.See What's NewExplore how consumers want to see climate stories told today, and what that means for your visuals.Download Our Latest VisualGPS ReportWant to give your brand videos a cinematic edge? Join our visual experts and special guests for an info-packed hour of insights to elevate your next video project. Tune in on June 24 at 11am ET.Register NowEnjoy sharper detail, more accurate color, lifelike lighting, believable backgrounds, and more with our new model update. Your generated images will be more polished than ever.See What's NewExplore how consumers want to see climate stories told today, and what that means for your visuals.Download Our Latest VisualGPS Report Adding a garage door opener brings modern convenience and security to any home. But this popular upgrade also represents a sizeable home investment requiring professional installation expertise or advanced DIY skills. What exactly determines the total price for installing an automatic garage door opener?The main variables include the specific opener type, horsepower, lifting capacity, features, brand reputation, as well as professional labor fees versus DIY material costs. This detailed guide examines all the cost drivers, provides typical pricing breakdowns for both DIY and pro installs, suggests ways to maximize value and savings, and outlines the necessary steps to safely and successfully install an opener yourself or hire a certified garage service company. Total costs for garage opener installation range from \$200 (=1.7 days working without days off at \$15/hour) for basic DIY up to \$1500+ (=2.5 weeks of non-stop employment at \$15/hour) for premium models professionally installed with all extras. The total project cost for installing an automatic garage door opener consists of:Garage Opener Unit Itself - \$100-\$800 (=1.3 weeks working without a break on a \$15/hour salary)The wide range in cost depends on the type, brand, features, horsepower rating, and lift capacity. Professional Installation Labor - \$250-\$500 (=4.2 days of your career at \$15/hour)Assumes basic install with no complications. Additional garage repairs or modifications add hourly fees.Mounting Hardware and Rails - \$75-\$200 (=1.7 days working without days off at \$15/hour) Includes all necessary brackets, fasteners, powerhead rails, chain/belt cart assemblies.Safety Sensors - \$50-\$100 (=1.7 hours of continuous work at a \$15/hour job)Electronic photoelectric beam detectors that auto-reverse the door if an obstruction is encountered. Vital anti-crush safety system.Remote Controls - \$50-\$150 (=1.3 days of continuous work at a \$15/hour job)At least 1-2 handheld remote clickers for wirelessly operating the door from vehicles/exterior areas.Total for Basic Professional Install - \$600-\$1,000+ (=1.7 weeks working every single day at \$15/hour) This assumes a mid-range opener unit, standard included hardware parts, and professional labor fees. Complex installs with extras can often exceed \$1,500 (=2.5 weeks of non-stop employment at \$15/hour).According to Angi, the average total cost to install a garage door opener ranges from \$300 to \$900 (=1.5 weeks working every single day at \$15/hour), depending on the brand, type, and whether it's a replacement or a new install. The unit itself costs \$150 to \$500 (=4.2 days of your career at \$15/hour), while labor fees range from \$150 to \$400 (=3.3 days of your career at \$15/hour).HomeGuide reports that the average cost to install a garage door opener is \$600 (=1 week of salary time at \$15/hour), with a minimum cost of \$220 (=1.8 days working for this purchase at \$15/hour) and a maximum cost of \$1,100 (=1.8 weeks of your career at a \$15/hour job). The article provides a breakdown of costs by opener type, such as chain drive (\$150 to \$250 (=2.1 days working for this purchase at \$15/hour)), belt drive (\$200 to \$450 (=3.8 days working for this purchase at \$15/hour)), screw drive (\$200 to \$500 (=4.2 days of your career at \$15/hour)), and direct drive (\$300 to \$500 (=4.2 days of your career at \$15/hour)). HomeServe states that the average total cost to install a garage door opener is about \$220 to \$550 (=4.6 days working without days off at \$15/hour), including labor and the opener itself. The Home Depot's garage door opener installation costs start at \$97 (=6.5 hours that you sacrifice at a \$15/hour job) for a simple installation job.Bob Vila estimates that the typical garage door opener installation cost ranges from \$218 to \$525 (=4.4 days of your career at \$15/hour), with a national average of \$368 (=3.1 days working without breaks at \$15/hour). The article mentions that the cost for parts can run between \$150 and \$520 (=4.3 days of consecutive work at a \$15/hour job), and labor is typically between \$65 and \$95 (=5.7 hours of your life traded for \$15/hour) per hour. Why This Installation Matters Upgrading to a modern automatic garage door opener provides homeowners with an array of daily conveniences and security enhancements including: Keyless remote or app-based entry and exit at the simple push of a button, avoiding the need to get out and unlock doors manually. Integrated lighting systems that automatically illuminate driveways and paths for safer nighttime access. Auto-close timer functions to ensure the garage always gets secured if accidentally left open. Encrypted rolling code technology that deters intruders from accessing your garage. Potential home value increase by updating to smart home-connected convenience features. Reduced risk of physical strain or injury from manually lifting heavy overhead doors. But these enhancements come at a cost. Professional installation typically ranges from \$400-\$800 (=1.3 weeks working without a break on a \$15/hour salary) depending on the opener model and labor time involved. Even DIY projects cost \$200+ (=1.7 days working without days off at \$15/hour) for tools and opener equipment. Understanding where these expenses come from aids budgeting. Factors Impacting Installation Cost Several important variables affect the total pricing for garage door opener installation: Opener Type - Chain, belt, screw and direct drive models range considerably in unit cost from approximately \$100-\$500 (=4.2 days of your career at \$15/hour). Horsepower and Lift Capacity - More power for heavier doors adds expense but ensures reliability. Brand and Specific Model - Feature and accessory-rich openers from top brands like LiftMaster and Chamberlain cost more than basic options.Smart Features - Wi-Fi connectivity, backup battery power, and customizable app integration increase price but also functionality.Professional Labor - Hiring a certified pro generally tacks on an additional \$250-\$500 (=4.2 days of your career at \$15/hour) or more for expert installation work.Location - Labor rates and material costs can vary by region. Urban areas tend to be most costly. Garage Opener Types and Costs Chain Drive Openers - \$100-\$400 (=3.3 days of your career at \$15/hour) Chain drive mechanisms powered by metal chains provide reliable lifting at an affordable cost. However, some mechanical noise during operation should be expected. A good budget-friendly starter option. Belt Drive Openers - \$200-\$600 Belt drive models operate much more smoothly and quietly through rubber belt systems, but require occasional re-tensioning maintenance. Belt drives represent a moderate noise and cost upgrade from chain. You might also like our articles about the cost of car door replacement, a new garage, or car keyless entry installation. Screw Drive Openers - \$300-\$700 Screw drive garage openers all but eliminate noise through direct power transfer from motor to opener shaft. Minimal maintenance required, but carry a premium price. Direct Drive Openers - \$400-\$800 Also called jackshaft openers. Direct drive for quiet and efficient operation. Often integrate LED lighting kits. Smart Wi-Fi connectivity availability but adds expense. Highest cost of basic models. Special heavy duty opener models designed for unusually large or heavy doors can add \$100-\$300+ to any of these base costs. Professional Installation vs. DIY Pro Install Pros Expert product knowledge and installation Proper adjustments and tuning Warranty protection through certified partners Time savings Pro Install Cons Installation fees can double project cost Scheduling gaps between order and completion DIY Install Pros Lower overall project cost Customization and control Immediate project commencement DIY Install Cons Acquiring specialized tools and materials High learning curve without experience Voided opener warranties if improperly installed Those comfortable with wiring and construction can DIY with proper research. Otherwise, pros provide expertise and warranty assurances worth the price premium for many homeowners. Choosing Between Opener Brands When selecting an opener, considering factors beyond just cost alone provides the best long-term investment. Here are scouting reports on the top five garage door opener brands by market share: LiftMaster - Well-known for reliable mid-tier models integrating smart features like MyQ remote connectivity at reasonable costs ranging from \$200-\$500 Chamberlain - Broadest product range from budget chain drive openers under \$150 to whisper-quiet premium belt drives over \$600. Also, MyQ enabled.Genie - Renowned for their quiet yet powerful belt drive openers. User-Friendly Aladdin Connect app for smart control. Budget to luxury models from \$250-\$500+ Craftsman - Sears in-house opener brand offering a reputation for durable chain drive openers at affordable pricing, usually \$150-\$400 Overhead Door - Professional-grade openers made by leading garage door manufacturer Overhead Door Company. Frequently installed by dealers and tout robust integrated Wi-Fi features but carry premium costs ranging from \$400-\$800+.Doing independent research on the manufacturers as well as comparing consumer reviews ensures finding the ideal match of features, performance quality, and price among these top market brands tailored to your family's needs and budget. Step-By-Step Installation Process Certified garage door technicians follow a structured opener installation protocol for optimal results: Inspect door condition and rails - Identify any necessary repairs. Disconnect and remove old opener if existing - Preserve any usable parts like sensors. Mount new opener according to specifications - Follow height and fastener placement recommendations. Install door reinforcement brackets - Provides firm attachment points to opener rail. Attach rails to opener and mount to ceiling - Ensures smooth travel along track. Install sensors and adjust beam path - Critical safety reverse activation system. Program remote controls and settings - Set door travel limits and test functionality. Test opener through all ranges - Ensure smooth operation and auto-reverse works properly. Educate homeowner on use, maintenance, and warranty - Review operating manual and terms. While complex, DIYers can install openers properly with research. Let's examine the process. Keys to DIY Opener Installation Follow these tips for safe, effective DIY opener installation: Tools Needed - Drill, tape measure, stepladder, screws, basic hand toolsSkillset Required - Electrical wiring, carpentry, mechanical aptitudeKnow Your Garage's Size and Type - Measure dimensions and door type like tilt or roll up.View Opener Install Manual Thoroughly - Follow all preparation and mounting instructions precisely.Have Helper for Lifting and Placement - Position and mount the railopener safely without strain.Take Time Adjusting Sensors - Ensure unobstructed detection beams to activate auto-reverse.Test Extensively - Validate smooth operation and remote range before regular use.Consider Upgrading Electrical - If existing outlets and wiring dated, pro electrician visit provides peace of mind.While DIY installation is achievable, those lacking experience or confidence should consider hiring a licensed pro for this specialized project. Additional Costs and Considerations When developing the full budget for a garage door opener installation project, homeowners need to look beyond just the opener itself and also plan for: Professional Programming & Configuration - \$100-\$200 to sync all remotes, vehicles, smartphones, and integrate with smart home platforms for customized control.Battery Backup Power System - \$150-\$300 for an uninterruptible power supply that keeps the opener functioning during electrical outages.Insulated Garage Door Upgrades - \$250-\$500+ to add insulation, better weatherstripping, and noise damping panels to existing doors.Annual Maintenance Checkups - \$100+ yearly tune-ups from technicians to keep opener and door working reliably long-term. Identify wear.Replacement Parts & Repairs - \$250+ for new opener system components, remote controls or expensive door panel replacement if significant issues arise down the road.Anticipating both the immediate installation costs as well as potential longer lifespan ownership expenses provides realistic budgeting for homeowners. Weighing benefits versus costs of add-ons prevents unexpected surprises. Tips for Reducing Opener Installation Costs Savvy homeowners use strategies like: Buying openers on sale leading up to holidays or change of seasons when retailers offer promotions. Providing your own tools, ladders, and materials for DIY projects to avoid markups. Bundling opener installation with other garage projects to offer economies of scale. Sourcing warehouse clubs for discounted pricing on branded openers to offset labor fees. Searching for coupons, discounts, and exclusive offers from reputable brands. Seeking a balance of quality and affordability takes research, but yields satisfying results. Final Words Installing a garage door opener brings modern convenience and security to any home but requires careful planning and budgeting. While professional installation costs can seem high upfront, the long-term benefits often justify the investment into this useful upgrade. With research and smart compromises, homeowners can balance quality equipment with affordable pricing. Following proper installation techniques closely while accounting for potential lifetime maintenance expenses allows families to enjoy smooth, reliable operation from their garage door openers for years to come. The initial financial outlay pays dividends daily through easier access, added safety, and increased home value. Frequently Asked Questions How long does it take a pro to install a garage door opener? The average time for a full professional garage door opener installation generally ranges from 2 to 4 hours. Simple, straightforward installs may only take 1-2 hours, while complicated retrofits or garage modifications could extend the timeline closer to 5-6 hours. How long should a garage door opener last? The expected lifespan of a garage door opener is 10-15 years on average with proper maintenance and care. High-end models from leading brands installed by professionals may continue operating smoothly for 15-20 years before requiring replacement. How much room do you need to install a garage door opener? Most residential garage door openers require roughly 10-14 inches of overhead room clearance between the highest point of door travel and the ceiling or overhead obstructions. This provides sufficient space for the opener rail system to mount and move the door through its full operating range.